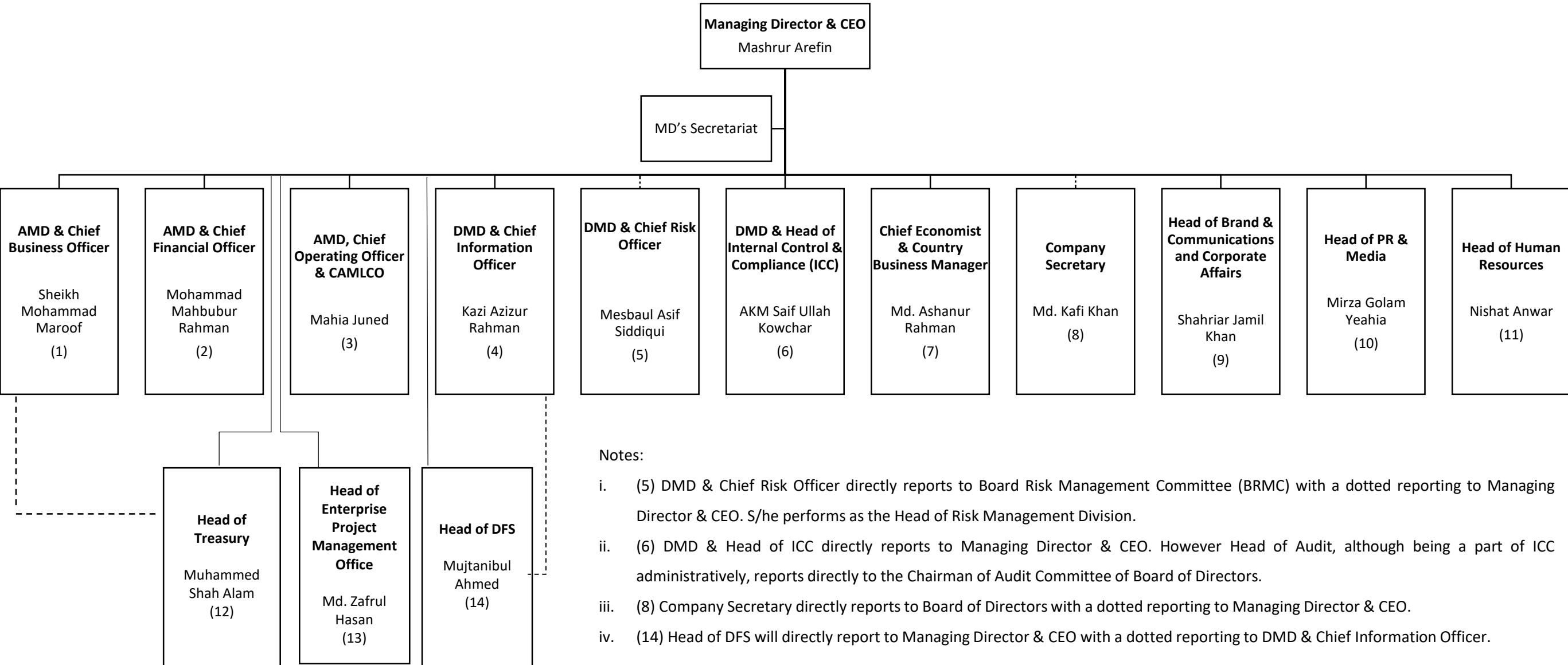


The City Bank Limited - Top Line
Direct Reports to Managing Director & CEO

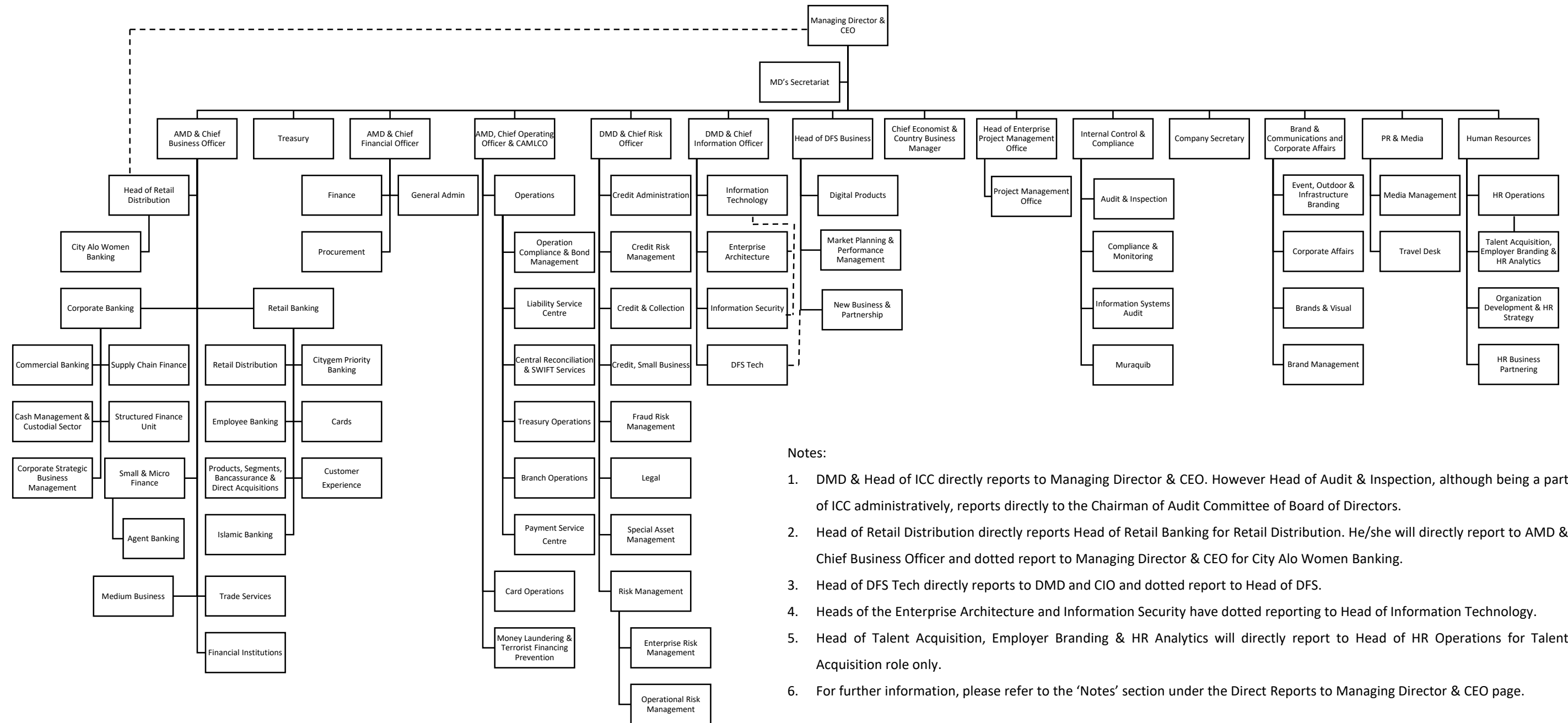


Notes:

- i. (5) DMD & Chief Risk Officer directly reports to Board Risk Management Committee (BRMC) with a dotted reporting to Managing Director & CEO. S/he performs as the Head of Risk Management Division.
- ii. (6) DMD & Head of ICC directly reports to Managing Director & CEO. However Head of Audit, although being a part of ICC administratively, reports directly to the Chairman of Audit Committee of Board of Directors.
- iii. (8) Company Secretary directly reports to Board of Directors with a dotted reporting to Managing Director & CEO.
- iv. (14) Head of DFS will directly report to Managing Director & CEO with a dotted reporting to DMD & Chief Information Officer.

The City Bank Limited - Top Line (page 2 of 2)

Skip levels of Managing Director & CEO



Notes:

1. DMD & Head of ICC directly reports to Managing Director & CEO. However Head of Audit & Inspection, although being a part of ICC administratively, reports directly to the Chairman of Audit Committee of Board of Directors.
2. Head of Retail Distribution directly reports Head of Retail Banking for Retail Distribution. He/she will directly report to AMD & Chief Business Officer and dotted report to Managing Director & CEO for City Alo Women Banking.
3. Head of DFS Tech directly reports to DMD and CIO and dotted report to Head of DFS.
4. Heads of the Enterprise Architecture and Information Security have dotted reporting to Head of Information Technology.
5. Head of Talent Acquisition, Employer Branding & HR Analytics will directly report to Head of HR Operations for Talent Acquisition role only.
6. For further information, please refer to the 'Notes' section under the Direct Reports to Managing Director & CEO page.